

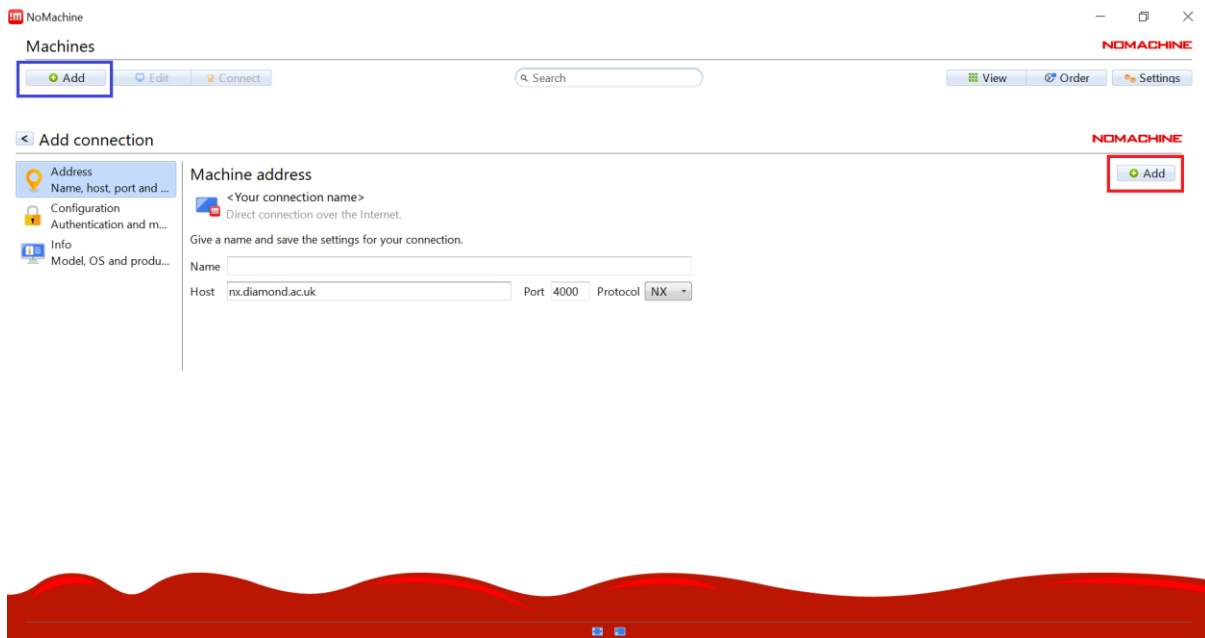
## Connecting to Diamond's Linux computers remotely

### Installing the up-to-date version of NoMachine

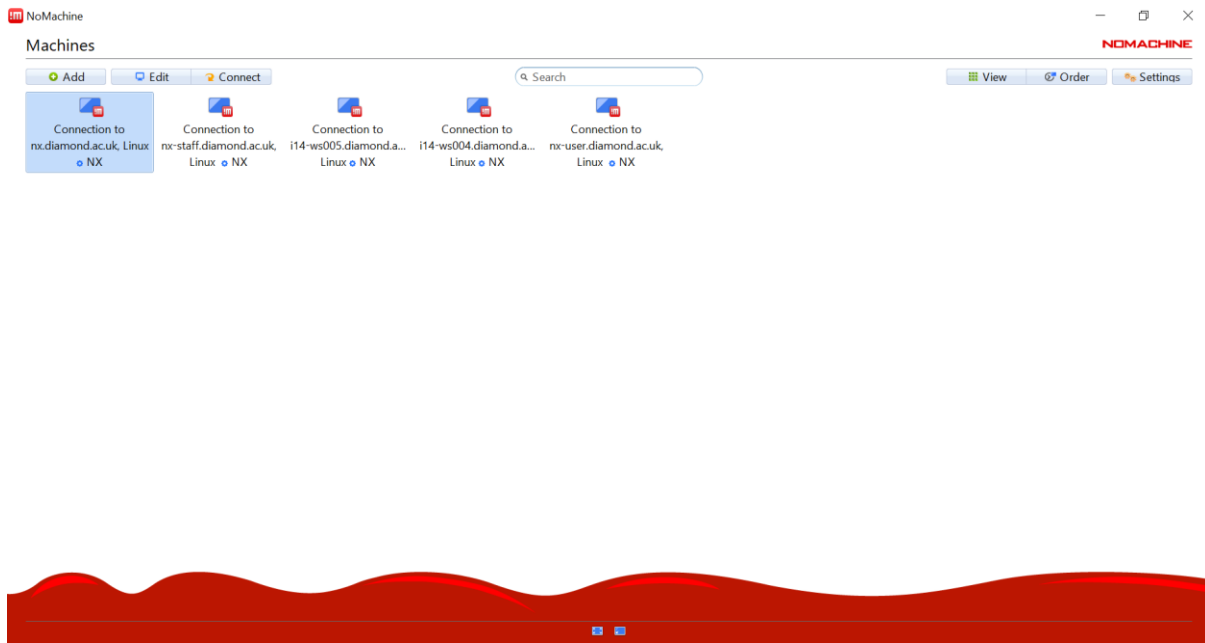
Some users are unable to connect to i14 workstations because they do not have installed the up-to-date version of NoMachine. Therefore, the remote desktop software should be updated/downloaded from:

<https://www.nomachine.com/download>

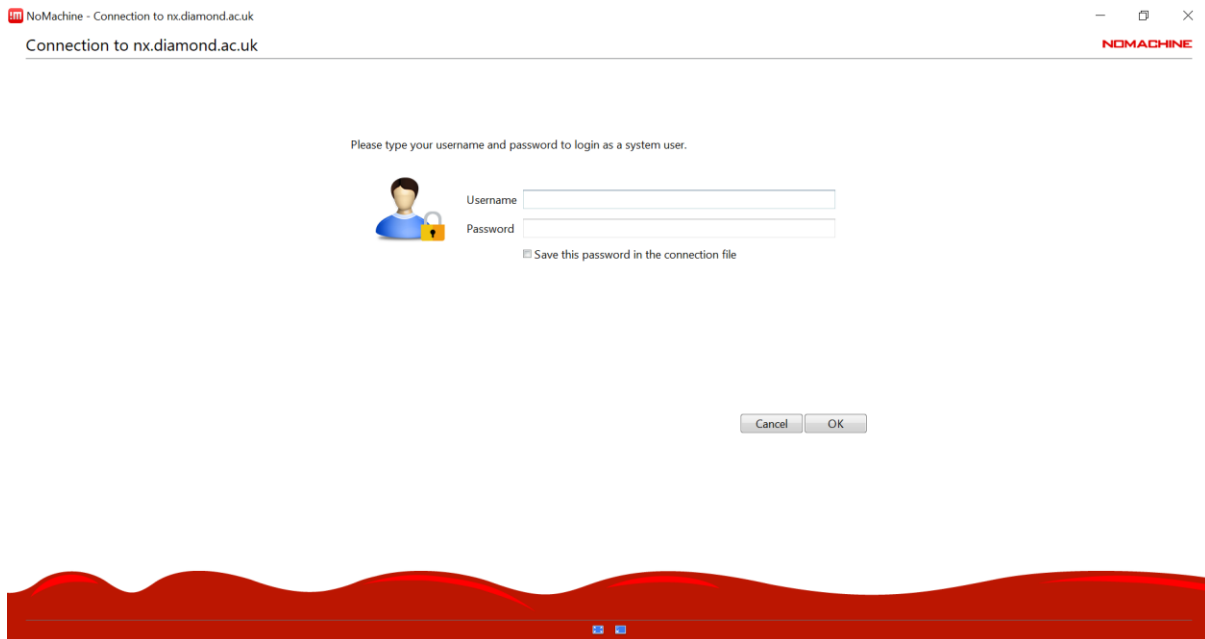
Once installed, "Add" a new connection (blue rectangle in the screenshot below). This will open a new window, in which the Host would be 'nx.diamond.ac.uk', being the NX the protocol in the right-hand side menu. To finalise the connection, click "Add" at the top-right corner (red rectangle below).



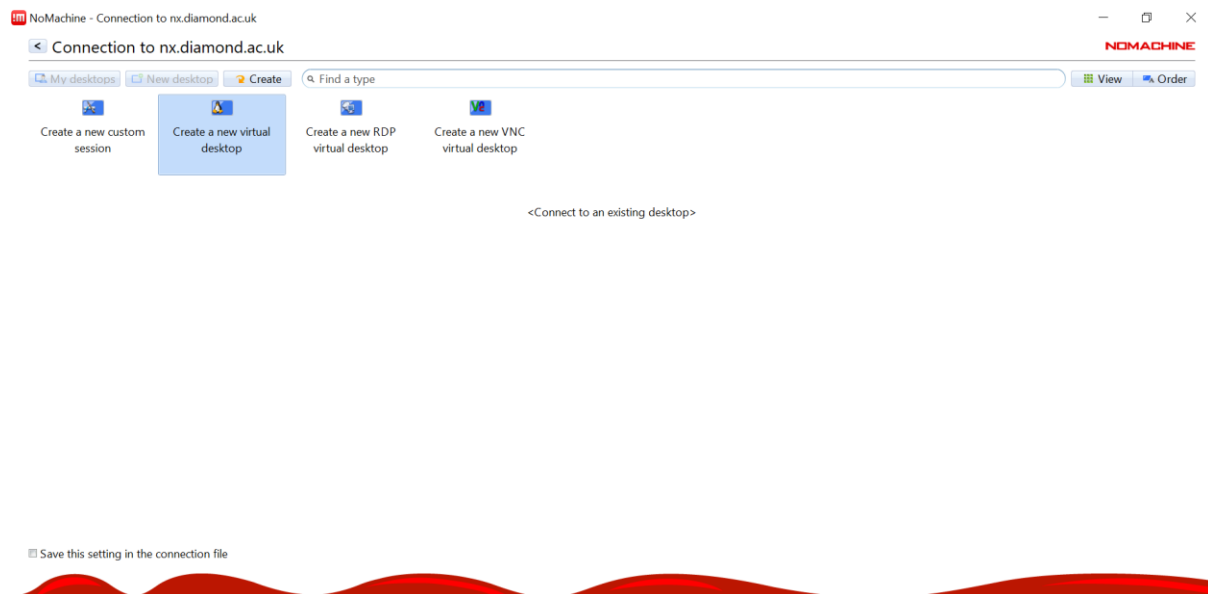
Then, double click the 'Connection to nx.diamond.ac.uk' to start the connection:



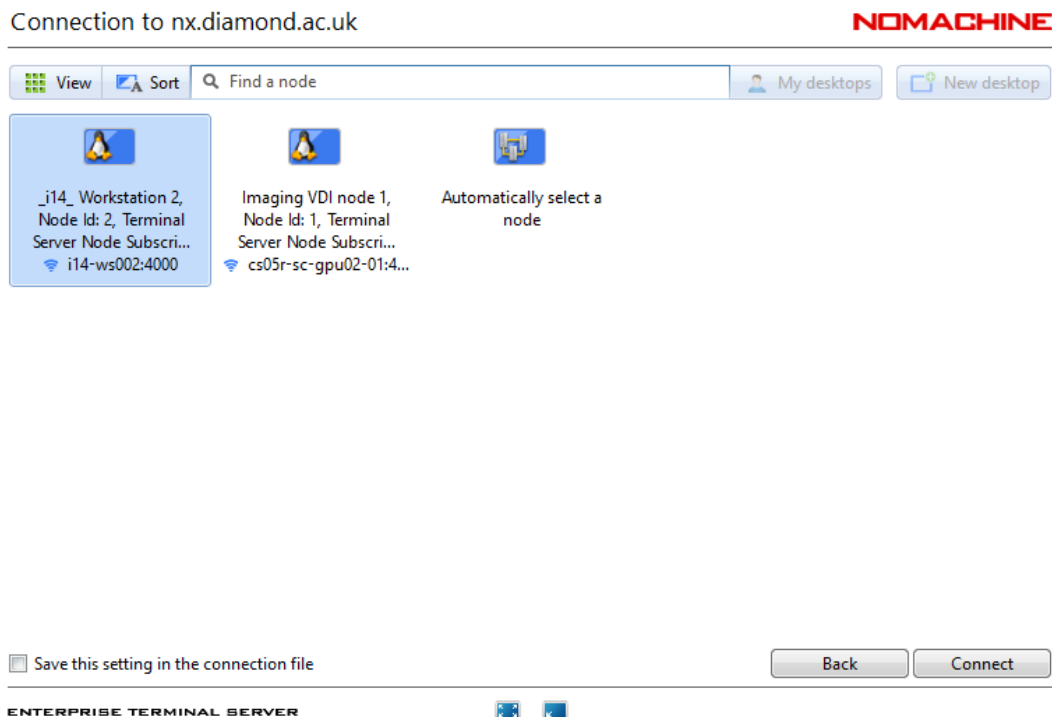
And you should add your FedID + your password (if you click 'save this password in the connection file' you will not be asked again the next time you connect):



Subsequently, select 'create a new virtual desktop':

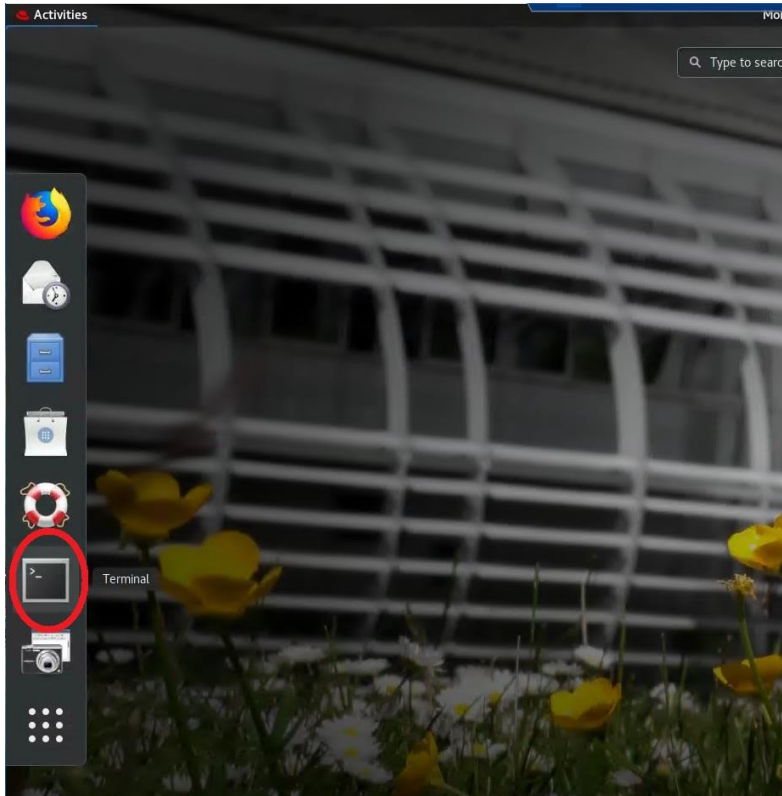


At this point, you should see the option to connect to an already created 'i14-ws002' node. If this workstation does not appear automatically, you could type i14-sw002 into the "Find a node" tab at the top of the screen. Finally, click "connect":



## Ensuring that you are connected to i14-ws002

In the top-left corner, click in the red hat symbol, and then select the “terminal” option:

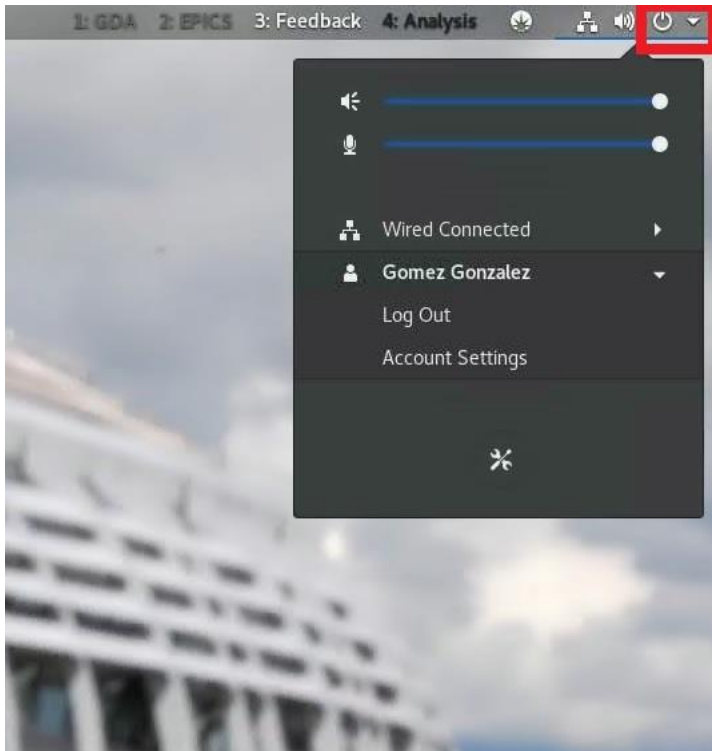


When the terminal appears, you should read your [FedID @ i14-ws002 ~] as shown in the screenshot below (again, changing ws005 by ws002 in this case).



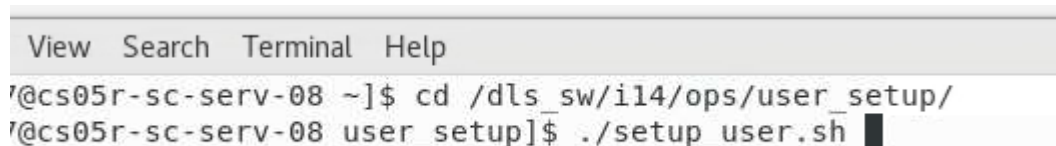
If you see [“your FedID”@csXXr-sc-serv-XX ~]\$, that means that you are connected to a virtual session, and NOT to the i14-ws002 computer. Therefore, you need to log-off from this session (switch-off bottom at the top-right corner, later select “Log Out”, see below).

Then repeat the search for the 'i14-ws002' in the "ssh.diamond.ac.uk" connection.

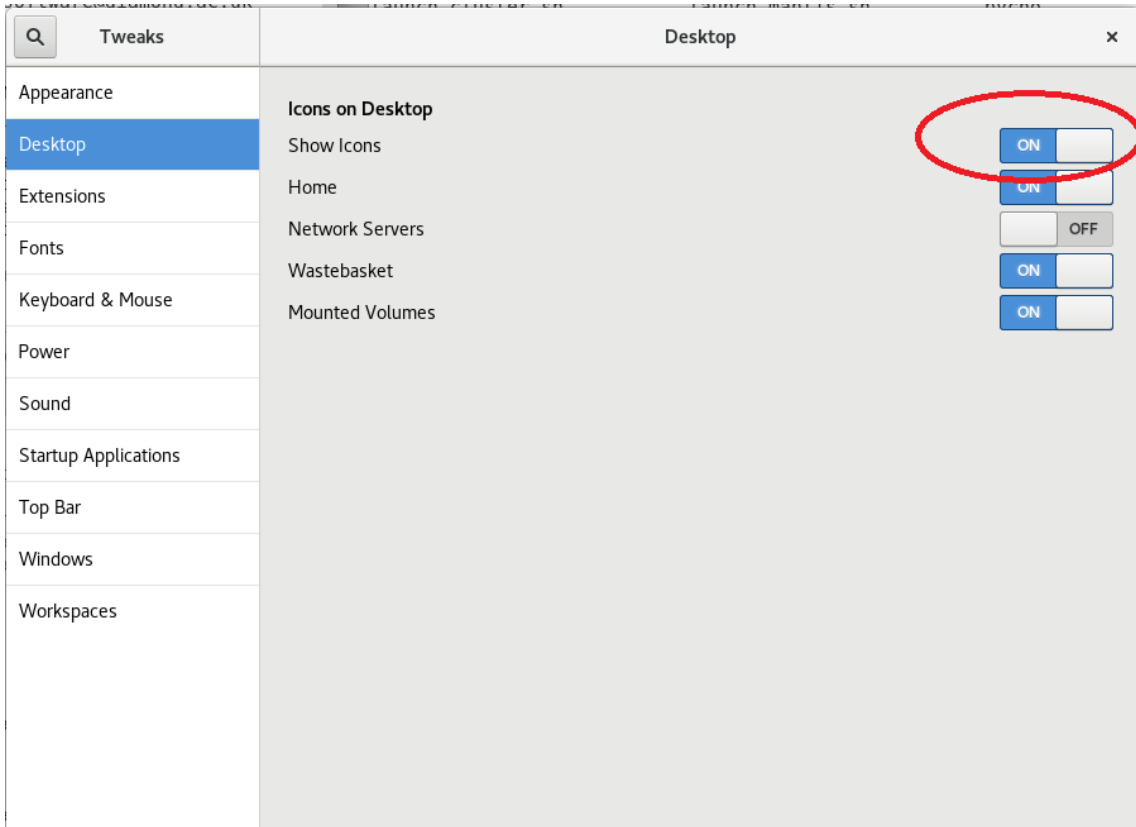


Once it pops out, please type the two command-lines below to automatically setup the User's desktop:

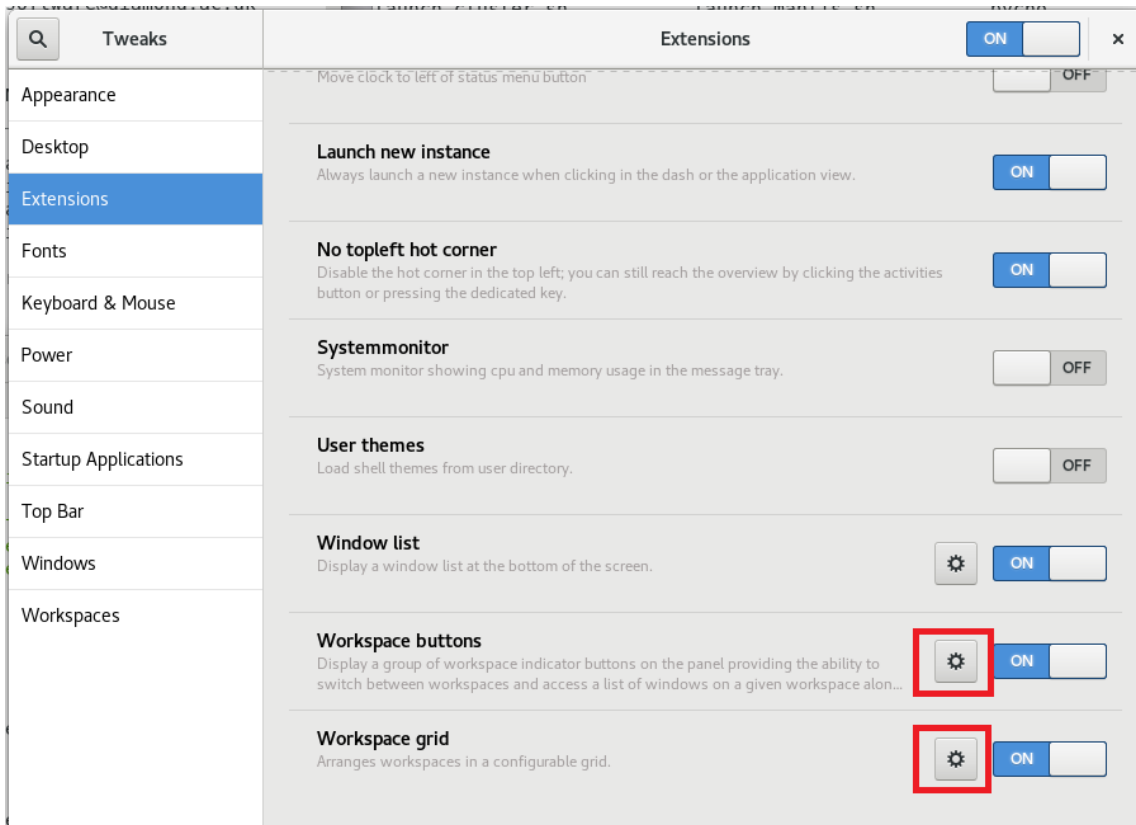
```
cd /dls_sw/i14/ops/user_setup/  
./setup_user.sh
```



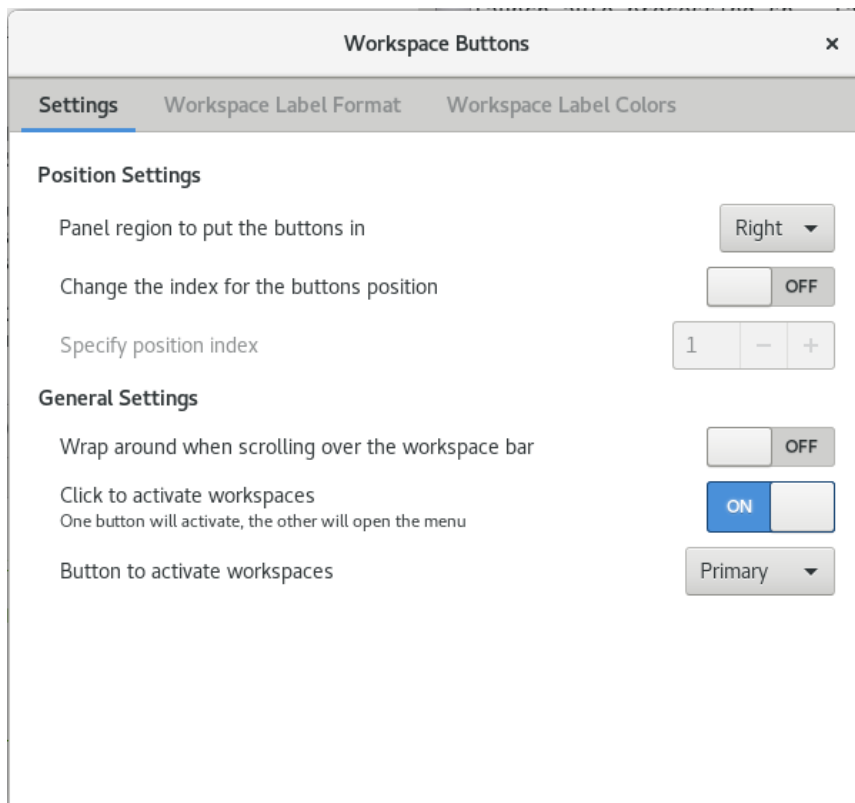
If no icons are shown in the desktop after submitting the previous command, there is some further display options to modify. To do this, type "**gnome-tweaks**" on a new terminal, which will open a window with several options. In the "Desktop" tab, please select the 'Show Icons' option to be ON (red circle, image below):



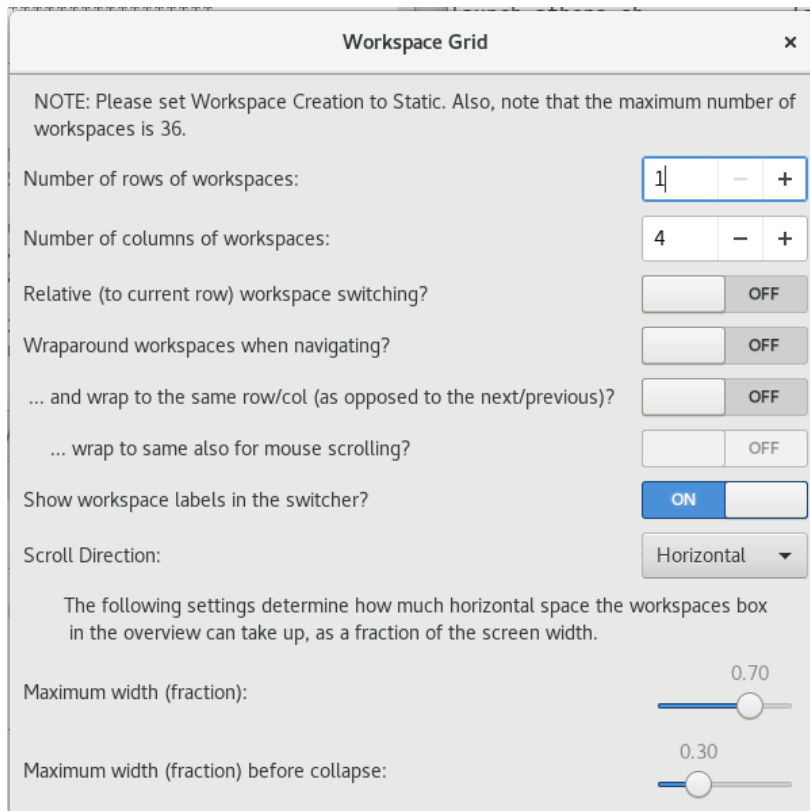
In the 'Extensions' tab also, please ensure that the Window List, the Workspace buttons and the Workspace grid are all ON. There is further tweaking to do by selecting each one of the individual metallic wheels marked with a red-square in the image below:



Selecting “Click to activate workspaces” in the workspace buttons.

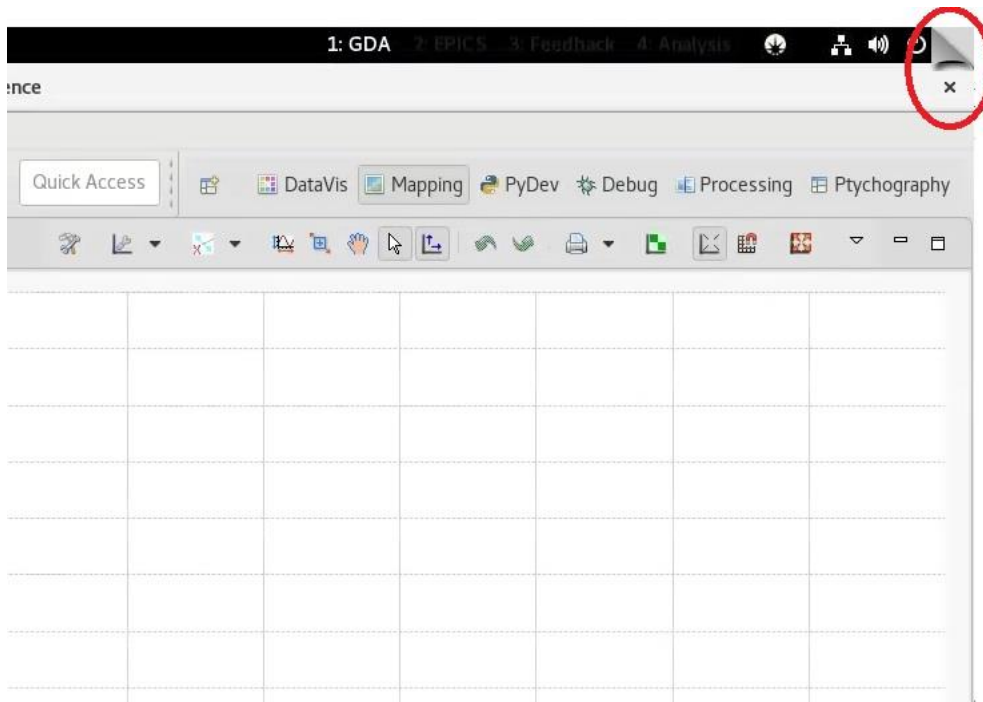


Finally, please select 4 workspaces as rows in the “Workspace Grid” option, as shown below:

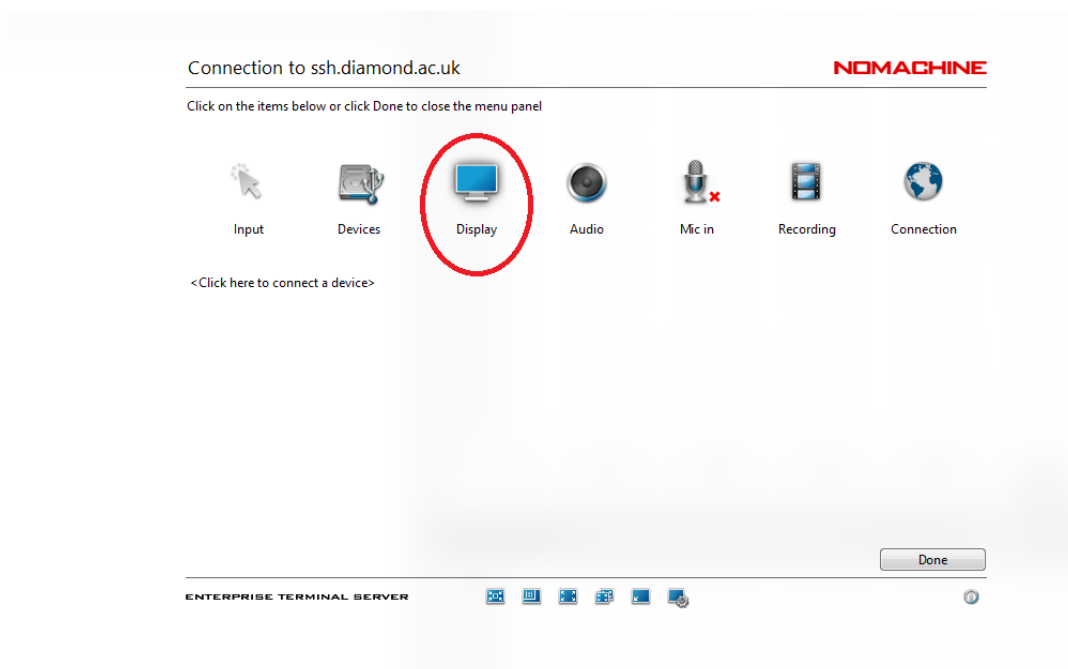


## Changing the displaying options/Ending the connection

Just click in the top right corner, where a bending corner appears:



Furthermore, in the display options, you can re-size your session to match your screen resolution:





Finally, for closing the session, select the connection option from the menu, and later disconnect from the server (last screenshot below).

Note that if you close the NoMachine program without disconnecting from your session, you could connect again to your “open session” again later in the day.

