

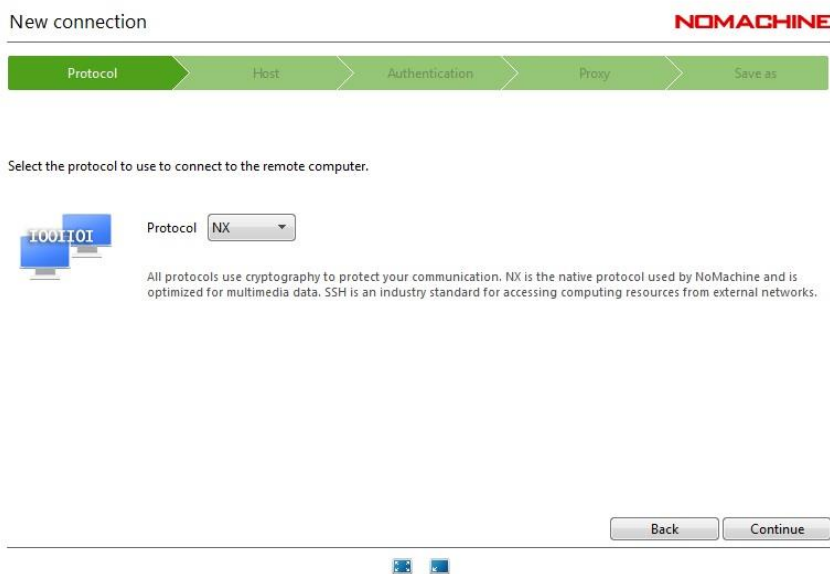
Connecting to Diamond's Linux computers remotely

Installing the up-to-date version of NoMachine

Some users are unable to connect to i14 workstations because they do not have installed the up-to-date version of NoMachine. Therefore, the remote desktop software should be updated/downloaded from:

<https://www.nomachine.com/download>


Once installed, you'd have to select the "New" tab when opening NoMachine, selecting NX as protocol, then click continue:



New connection NOMACHINE

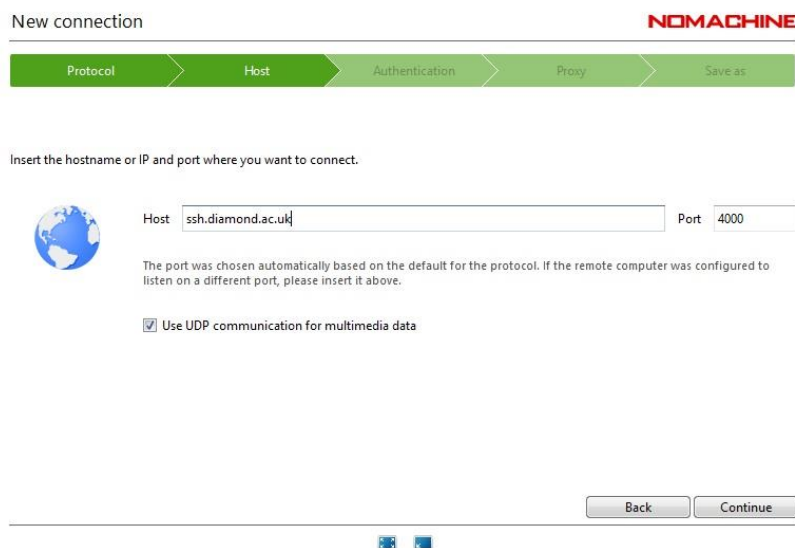
Protocol Host Authentication Proxy Save as

Select the protocol to use to connect to the remote computer.

 Protocol

All protocols use cryptography to protect your communication. NX is the native protocol used by NoMachine and is optimized for multimedia data. SSH is an industry standard for accessing computing resources from external networks.


connect to `ssh.diamond.ac.uk`, then continue:



New connection NOMACHINE

Protocol Host Authentication Proxy Save as

Insert the hostname or IP and port where you want to connect.

 Host Port

The port was chosen automatically based on the default for the protocol. If the remote computer was configured to listen on a different port, please insert it above.

Use UDP communication for multimedia data


Using password, you'd have to provide your credentials later on:

New connection NOMACHINE

Protocol > Host > Authentication > Proxy > Save as

Choose which authentication method you want to use.

- Password
Use password authentication.
- Private key
Use key-based authentication with a key you provide.
- Kerberos
Use Kerberos ticket-based authentication.




Select 'Don't use a proxy':

New connection NOMACHINE

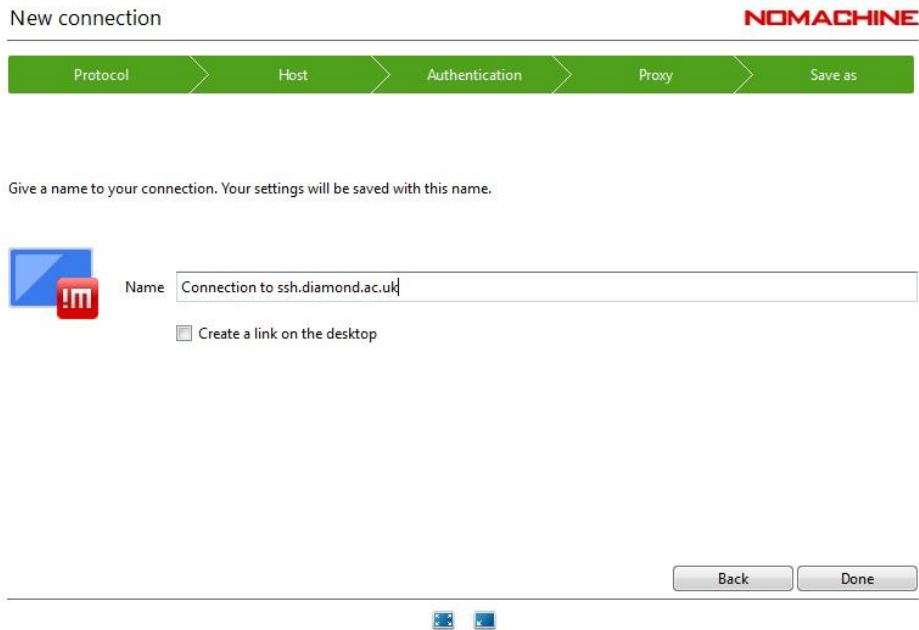
Protocol > Host > Authentication > Proxy > Save as

Use a proxy for the network connection.

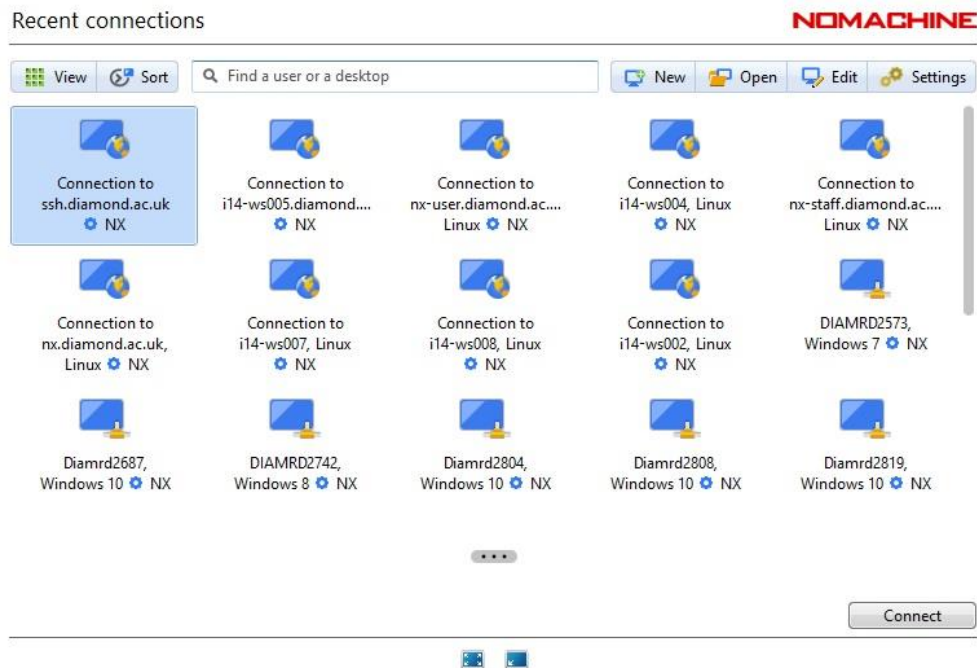
- Don't use a proxy
Choose this if you are connecting to a computer on your same LAN or if you are on a residential broadband connection.
- Connect using a proxy
Use a proxy if you are connecting to a computer outside your LAN from a corporate network where external access is protected by a firewall.



And finally name how you want this connection to appear in your initial screen:



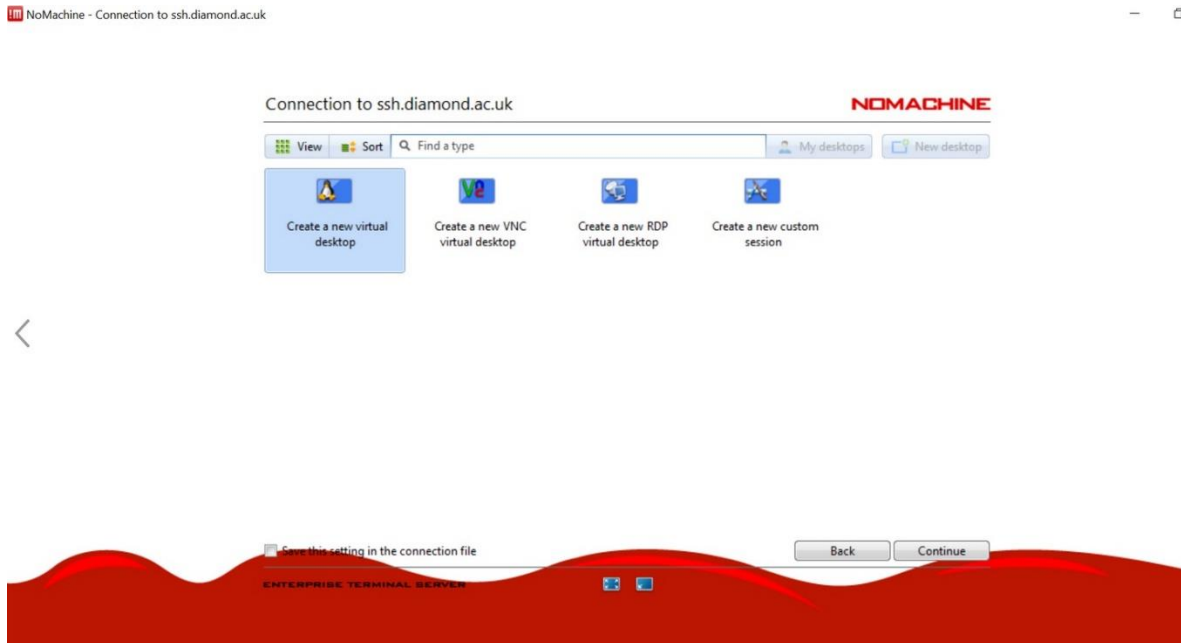
This will automatically create this new connection in your NoMachine interface, so click "connect":



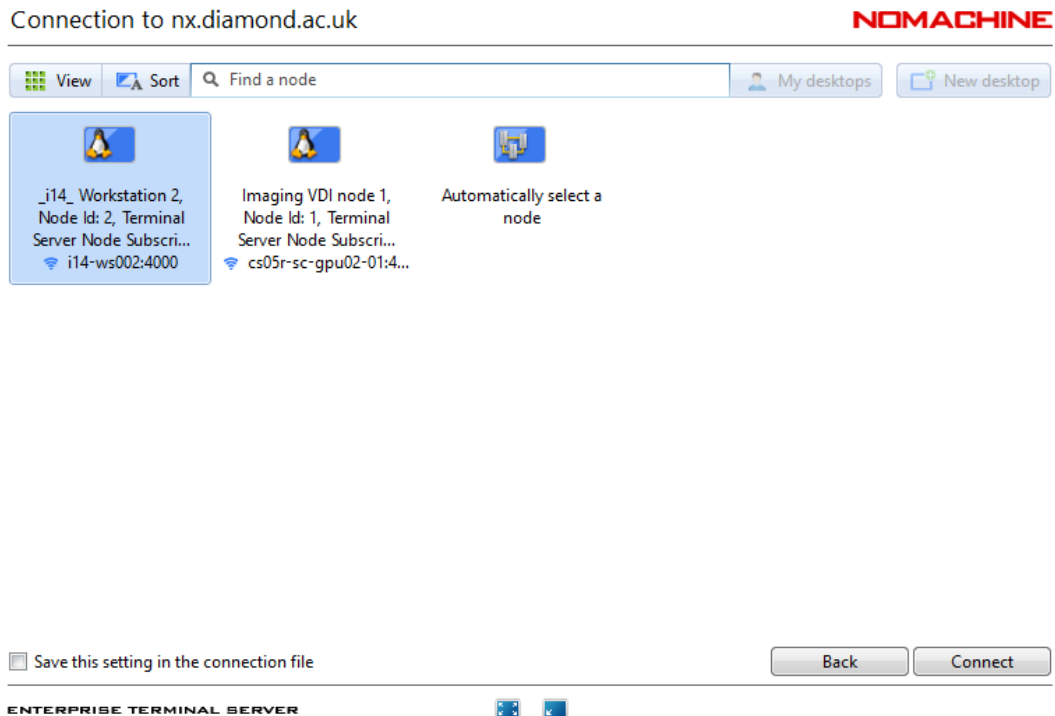
And you should add your FedID + your password (if you click 'save this password in the connection file' you will not be asked again the next time you connect):



Select 'create a new virtual desktop':

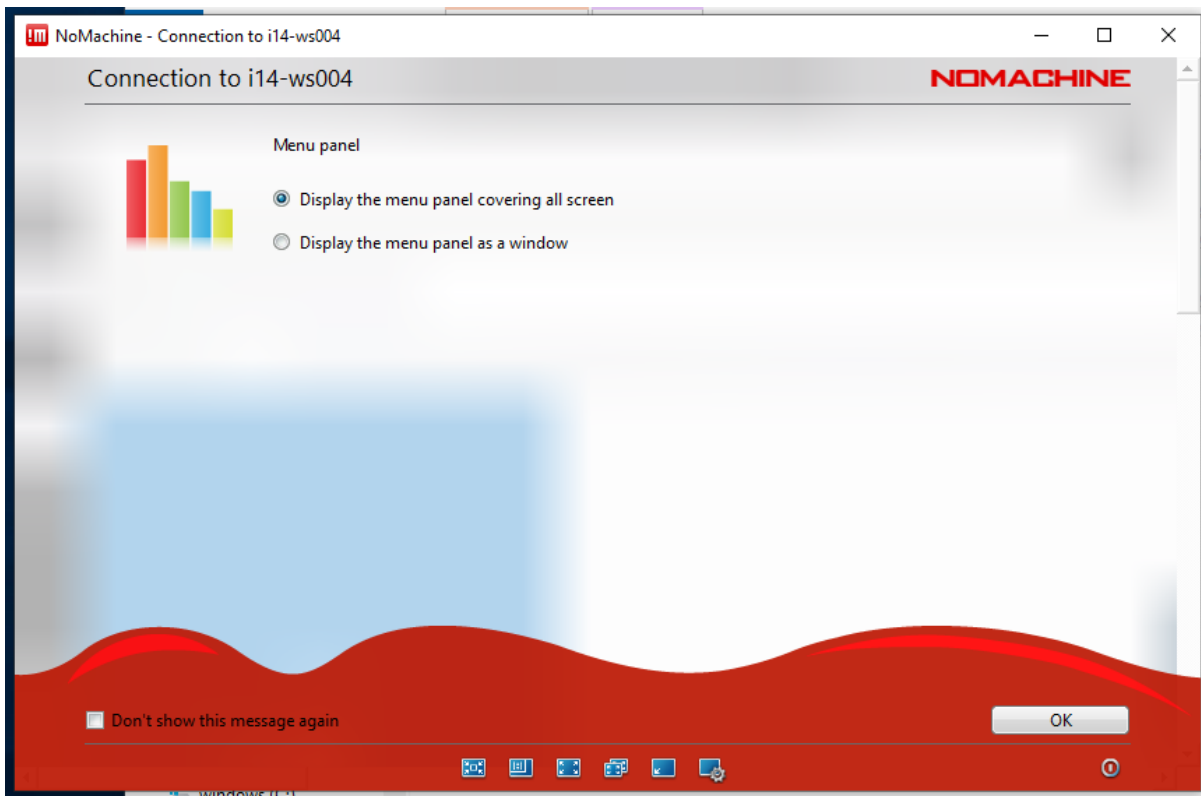


At this point, you should see the option to connect to an already created 'i14-ws002' node. If this workstation does not appear automatically, you could type i14-sw002 into the "Find a node" tab at the top of the screen. Finally, click "connect":

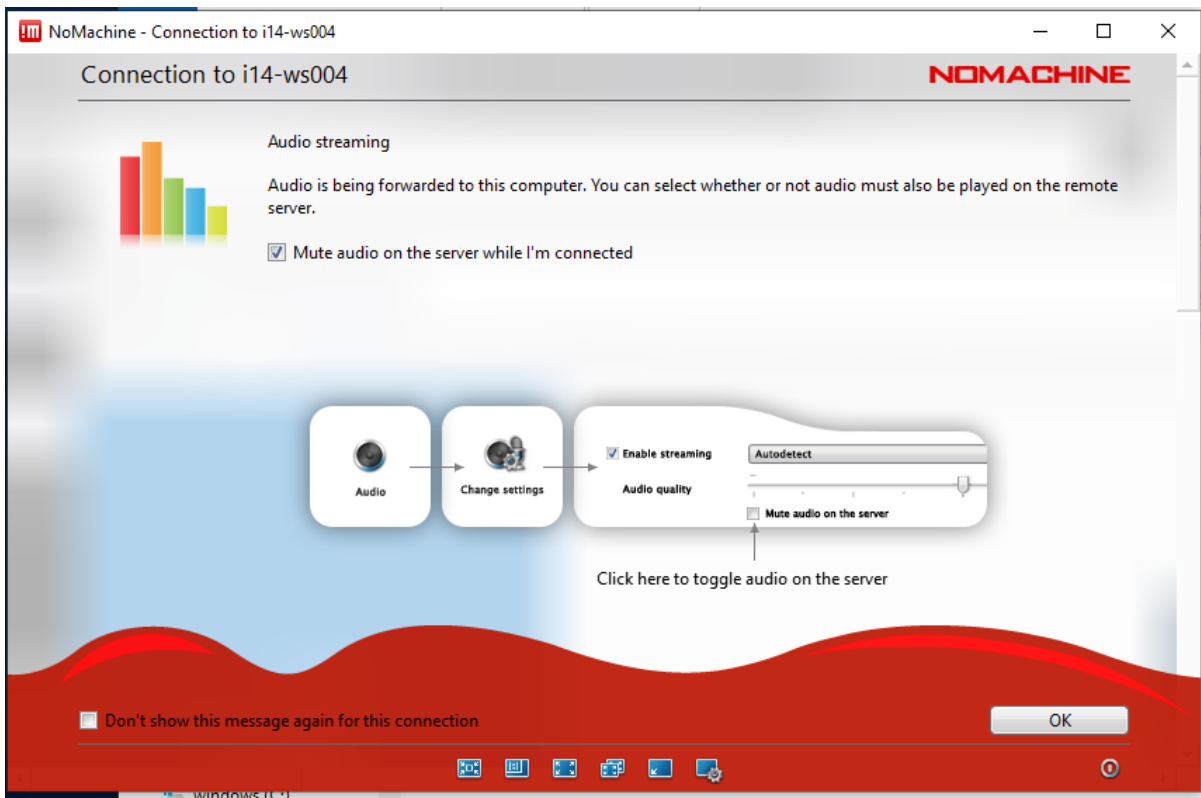


Below are the rest of the steps to follow once you had selected the ws002. Please note that the screenshots below say i14-ws004, but you **have to select i14-ws002** because this is the workstation which had been recently set up for remote users work.

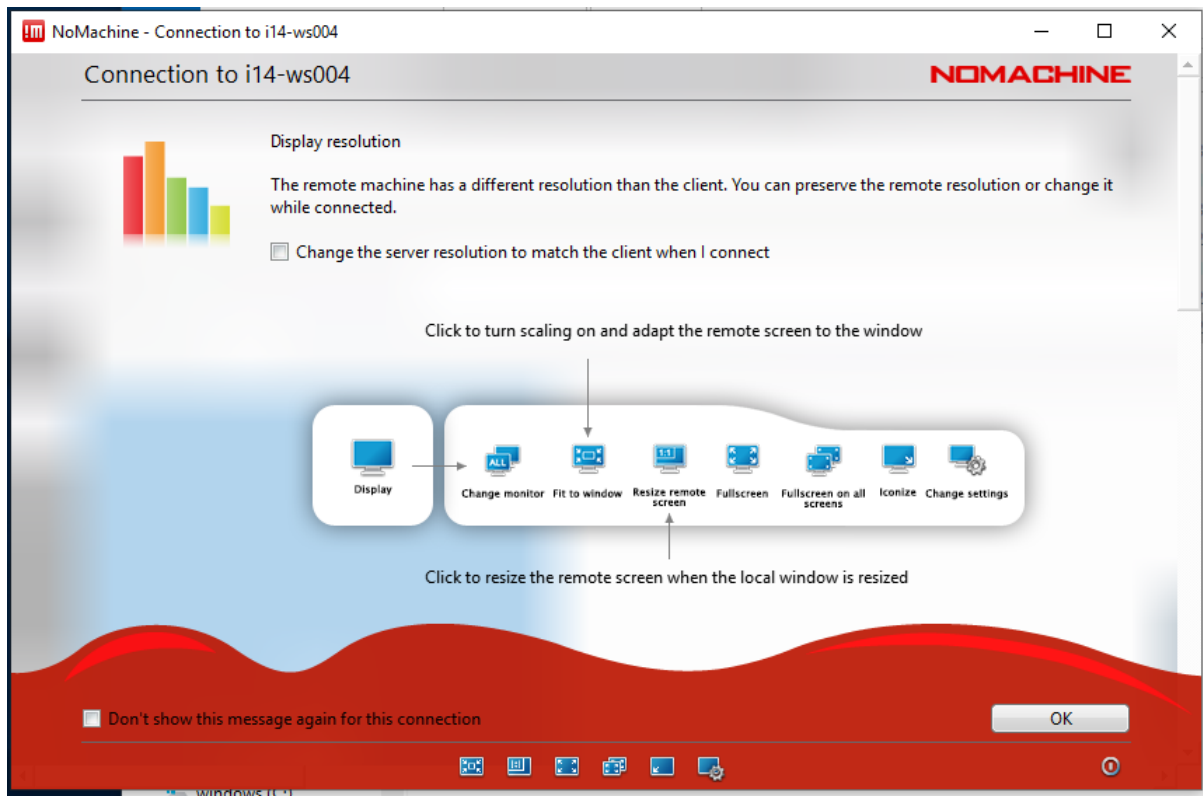
Selecting the displaying options:



Select the option to “mute audio on the server while I’m connected”:

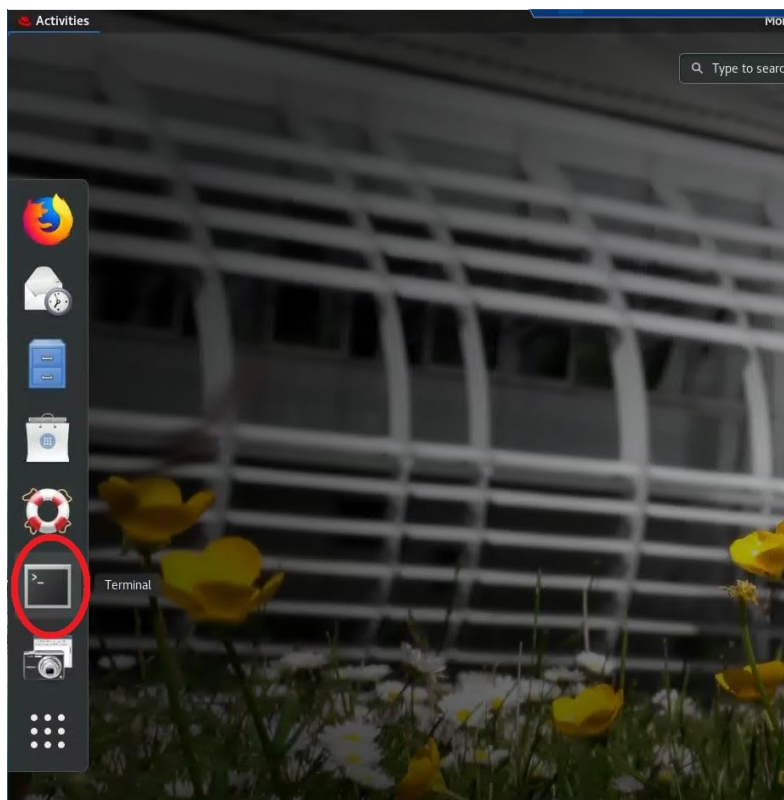


And please, DESELECT the option ‘Change the server resolution to match the client when I connect’:



Ensuring that you are connected to i14-ws002

In the top-left corner, click in the red hat symbol, and then select the "terminal" option:

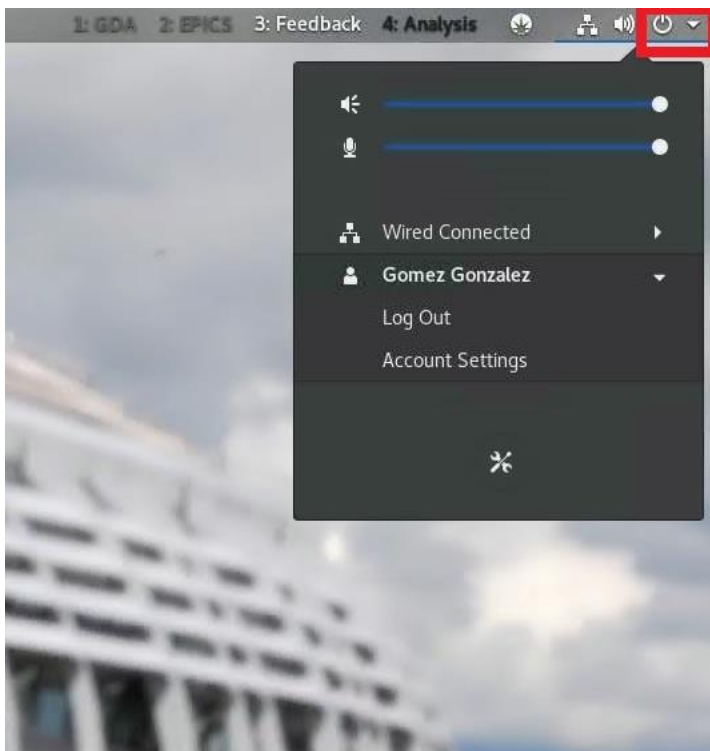


When the terminal appears, you should read your [FedID @ i14-ws002 ~] as shown in the screenshot below (again, changing ws005 by ws002 in this case).

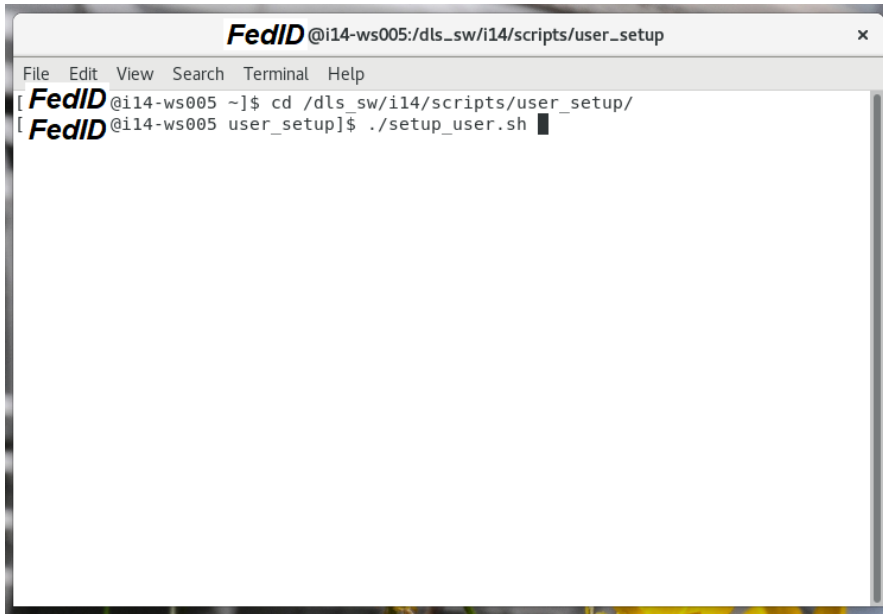


If you see ["your FedID"@csXXr-sc-serv-XX ~]\$, that means that you are connected to a virtual session, and NOT to the i14-ws002 computer. Therefore, you need to log-off from this session (switch-off bottom at the top-right corner, later select "Log Out", see below).

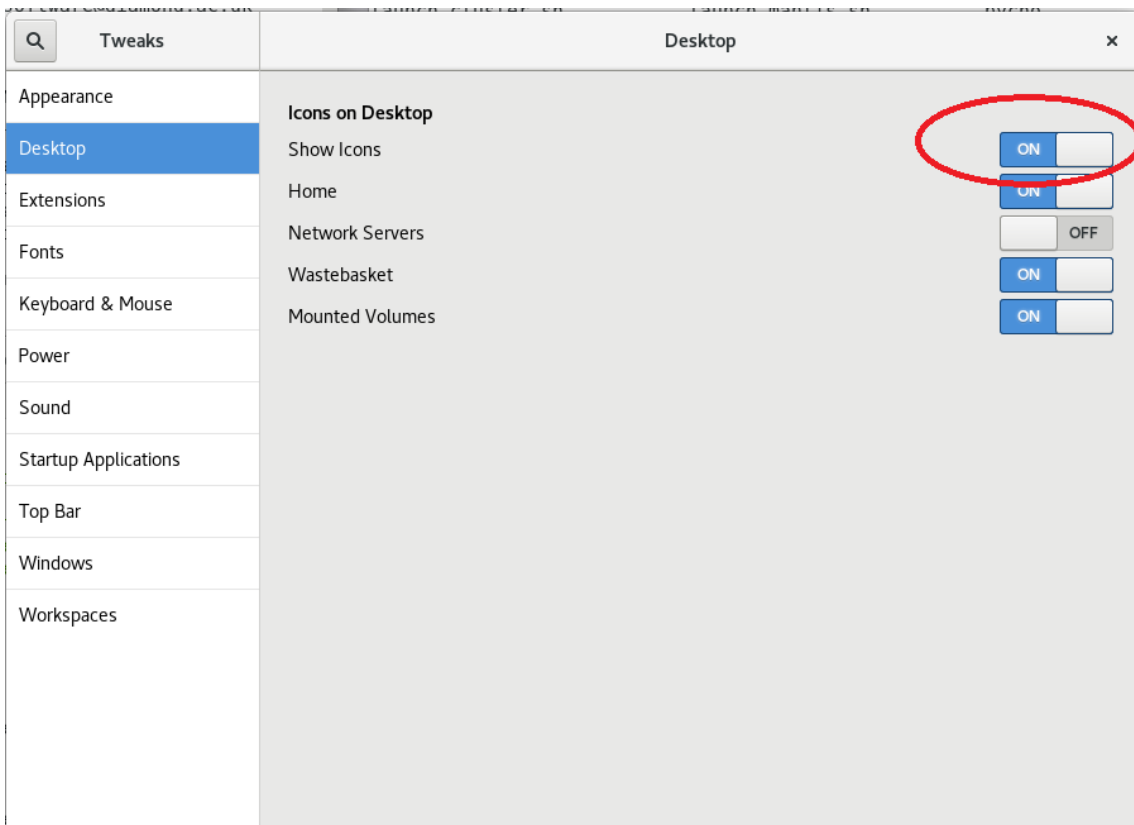
Then repeat the search for the 'i14-ws002' in the "ssh.diamond.ac.uk" connexion.



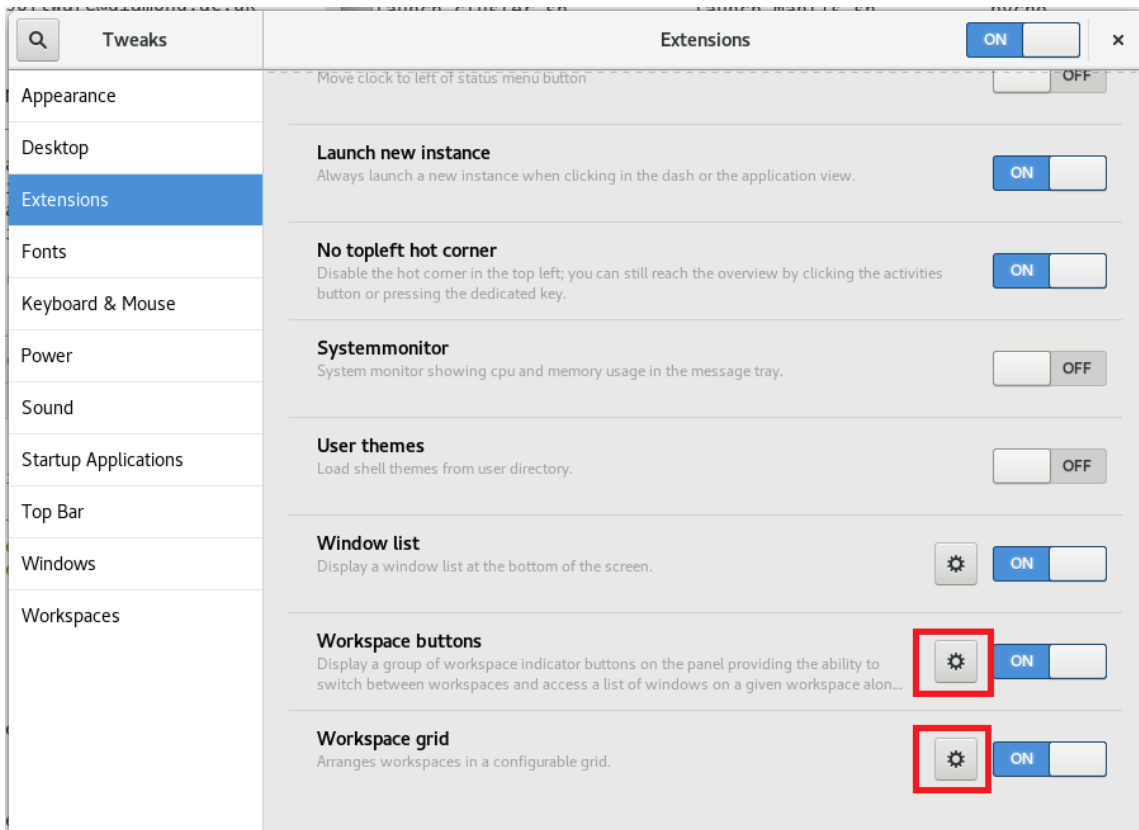
Once you are connected to the right terminal, please type the two command-lines shown below to automatically setup the User's desktop:



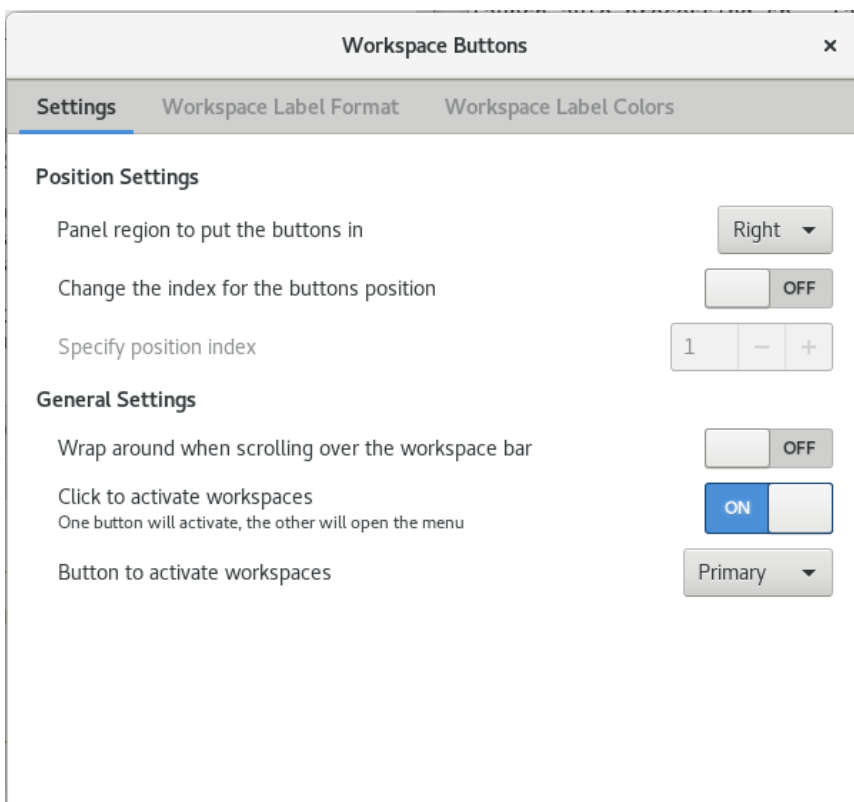
If no icons are shown in the desktop after submitting the previous command, there is some further display options to modify. To do this, type “gnome-tweaks” on the same terminal, which will open a window with several options. In the “Desktop” tab, please select the ‘Show Icons’ option to be ON (red circle, image below):



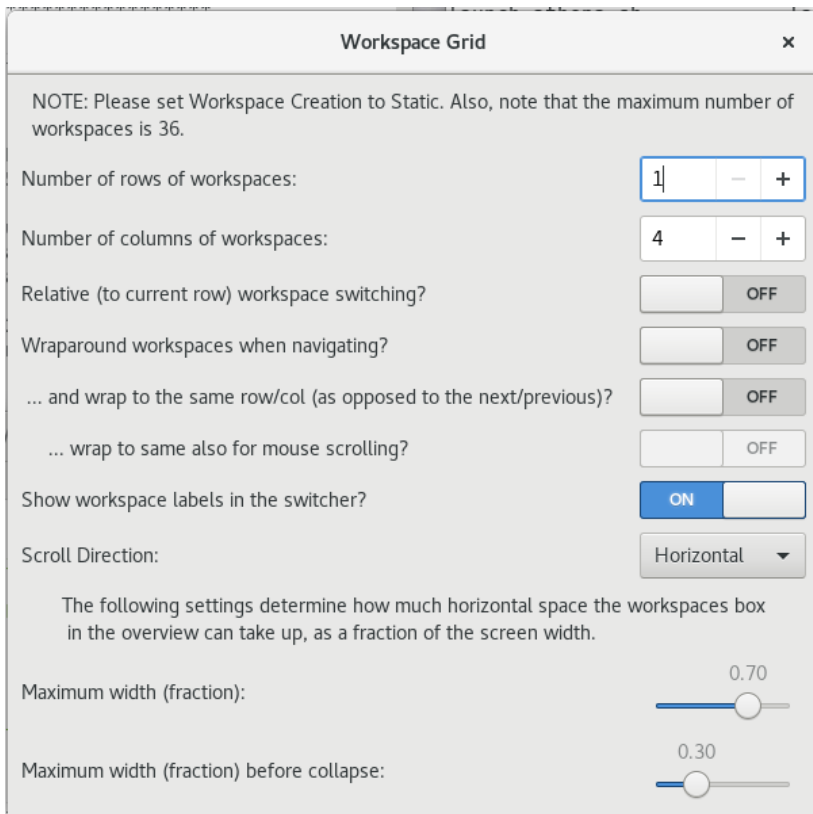
Also in the ‘Extensions’ tab ensure, that the Window List, the Workspace buttons and the Workspace grid are all ON. There is further tweaking to do by selecting each one of the individual metallic wheels marked with a red-square in the image below:



Selecting “Click to activate workspaces” in the workspace buttons.

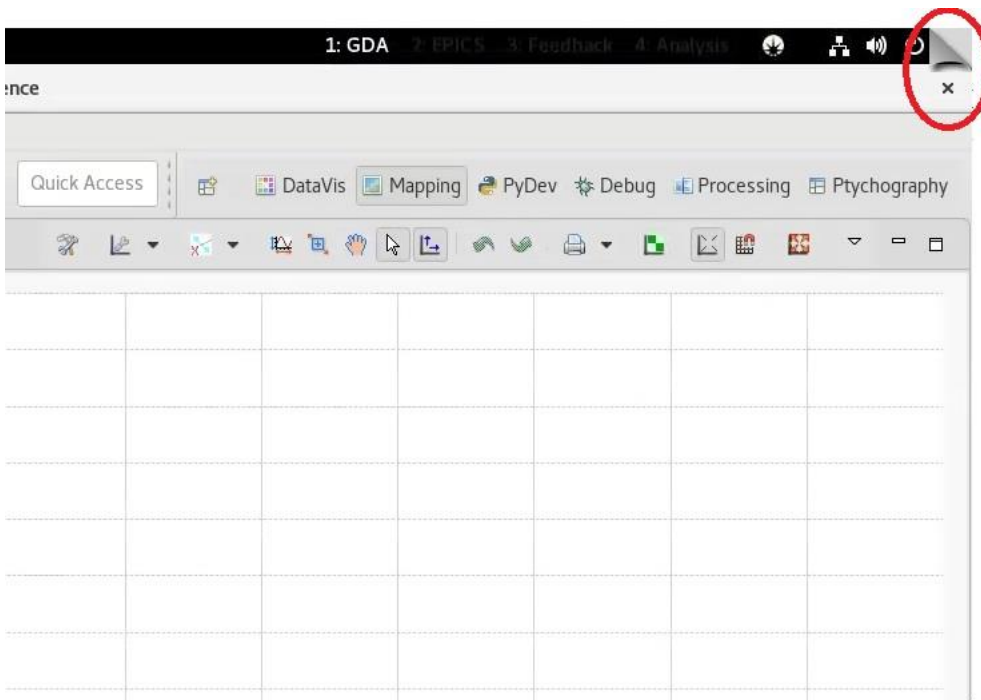


Finally, please select 4 workspaces as rows in the “Workspace Grid” option, as shown below:

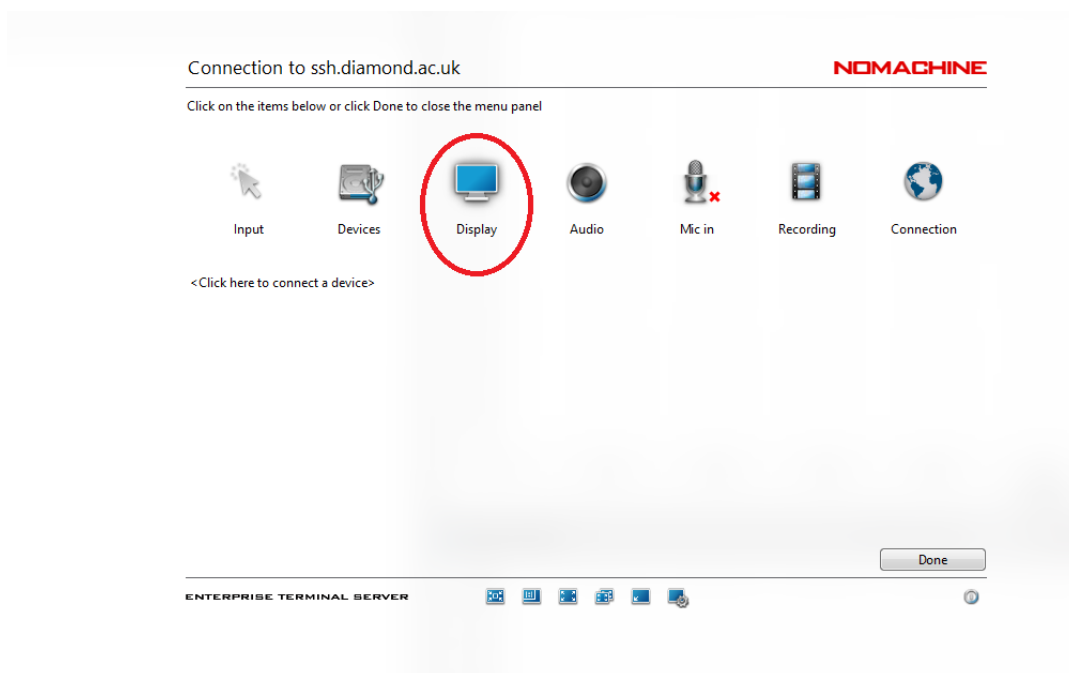


Changing the displaying options/Ending the connexion

Just click in the top right corner, where a bending corner appears:

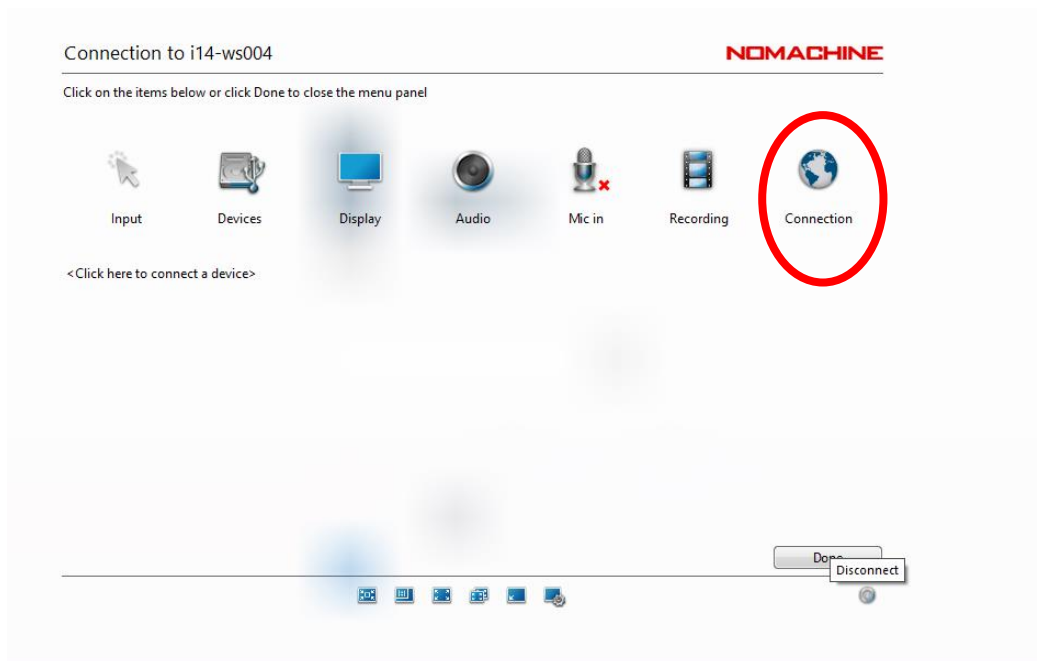


And subsequently, in the display options, you can re-size your session to match your screen resolution:



Finally, for closing the session, select the connection option from the menu, and later disconnect from the server (last screenshot below).

Note that if you close the NoMachine program without disconnecting from your session, you could connect again to your "open session" again later in the day.



Connection to i14-ws004

NOMACHINE

Click on the button below to disconnect or close the player, click Cancel to ignore.



Remember current window size and position

Cancel

