

XChem Drop-in Session

15th July 2024



Filesystem and cluster migration



- GPFS02 file system decommissioned due to age and lack of support
- All MX beamlines, including XChem, migrated to GPFS04 file system
- Migration necessitated transition to Wilson cluster and SLURM job scheduler
 - Required significant backend updates to XCE
- Unscheduled power outage during shutdown delayed filesystem migration and testing/debugging of XCE updates
 - Migration complete and all live data should be accessible
 - Serious failure of GPFS02 system
 - No known data loss – please report if data not available on filesystem or [DataGateway](#) (icat)
- Updated XCE now available and [XChem user manuals](#) updated
 - Please report any issues to XChem team as normal

Running jobs on Wilson cluster with SLURM



- “`source /dls/science/groups/i04-1/software/XChem/xchempaths.sh`”
- Launching a job on the Wilson cluster requires your password
- Default token time 1 hour – may need to re-enter password or restart XCE to launch jobs (“error 7000”)
- To check the status of jobs on the cluster, type into terminal:
 - “`ssh wilson`” – connect to the Wilson Cluster
 - “`sacct`” – display jobs
 - “`scancel <jobid>`” – cancel a job
 - “`watch sq.sh -u <yourfedid> -nf`” – watch jobs
 - “`sbatch <script>`” – submit batch job



```
Every 2.0s: sq.sh -u ill13029 -nf
```

```
ill13029's queue
```

```
No jobs running.
```

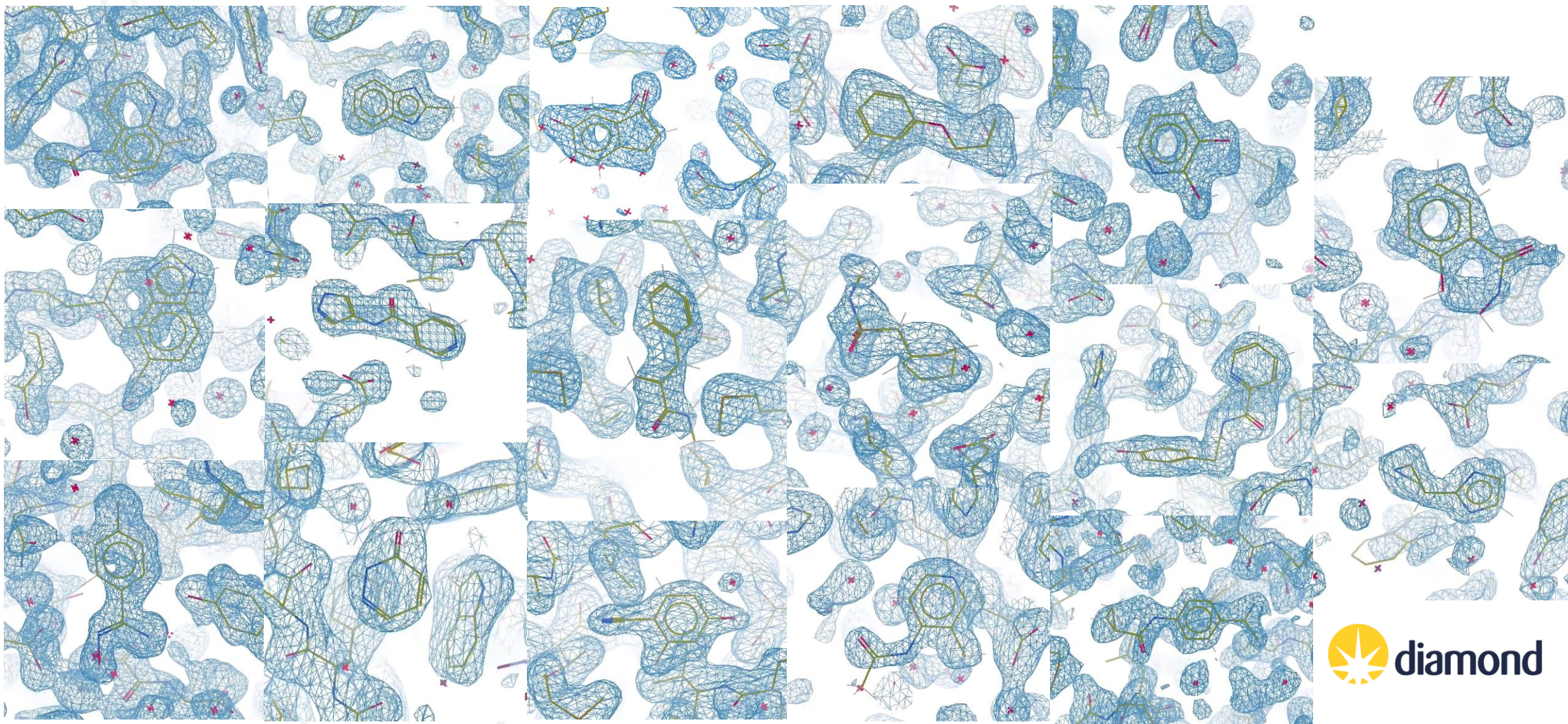
```
No jobs pending.
```

```
Previous 10 jobs (last fortnight):
```

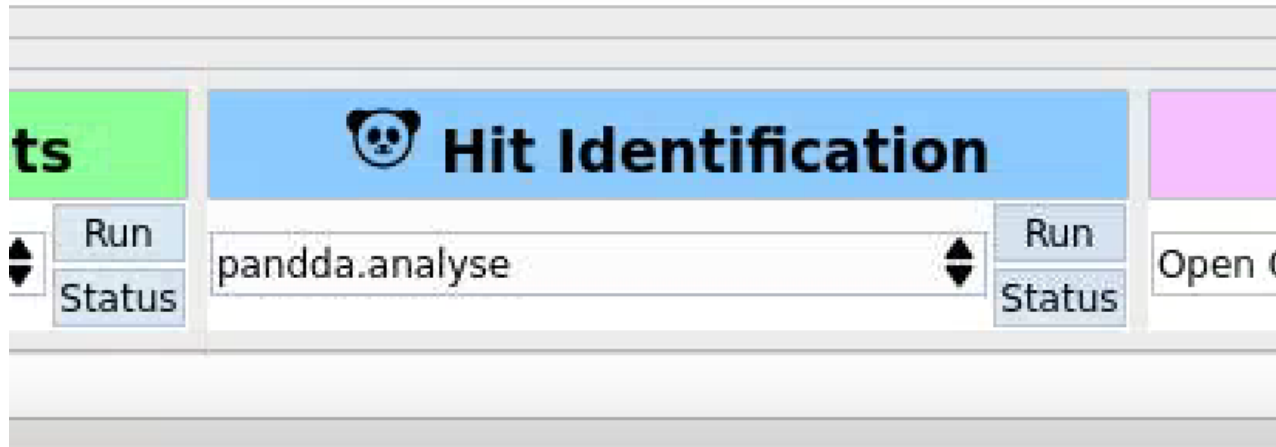
JobID	'Job Name'	#N #C	Start Time	Run Time	Status
9363997	'xce_buster'	1 1c	Jul 1st 08:38	40m 20s	Completed
9368556	'xce_buster'	1 1c	Jul 1st 12:58	36m 21s	Completed
9370433	'xce_buster'	1 1c	Jul 1st 13:50	33m 4s	Completed
9372944	'xce_buster'	1 1c	Jul 1st 14:55	24m 30s	Completed

PanDDA 2 discovers new hits

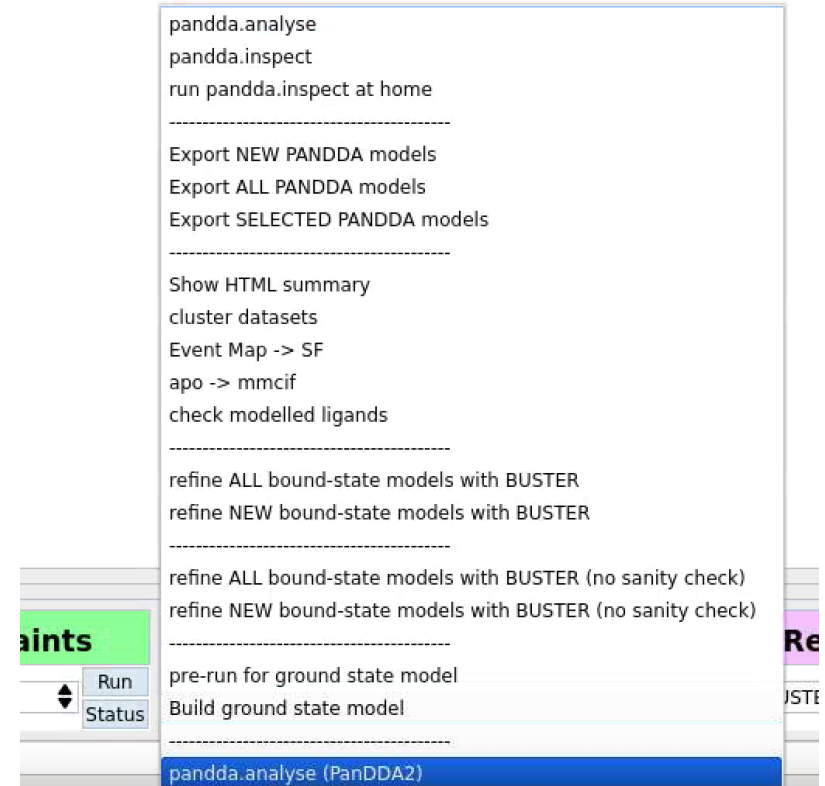
Convincing models in every studied system with over 15 systems studied in detail



PanDDA 2 can now be accessed via XCE



The process is otherwise the same as PanDDA 1

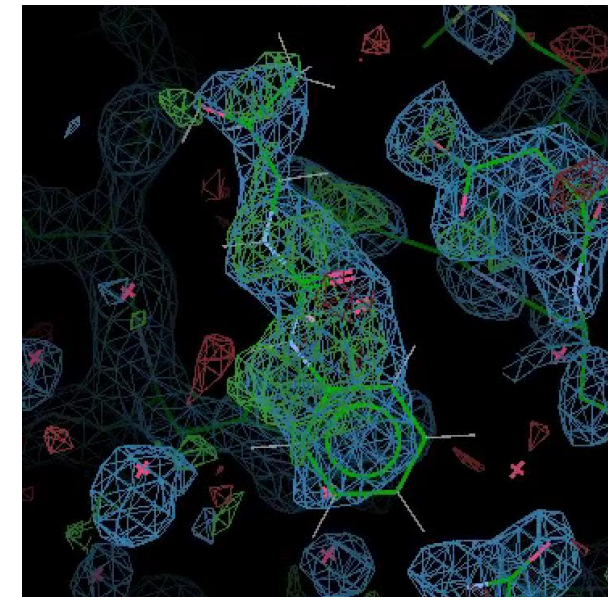


Changes to PanDDA.inspect

Expect more events but they are better ranked within sites

Overall Inspection Event/Site Progress:			
Event	1	of	1083
Site	0	of	29

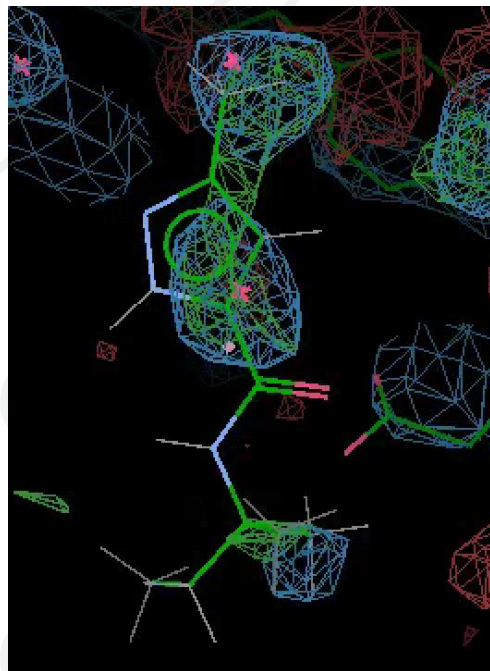
Autobuilt models will be present in some events



Z-blob peak now contains a score from 0.0 to 1.0, with higher being more ligand-binding-event-like

1 - BDC	0.18
Z-blob Peak	0.9
Z-blob Size	247

Autobuilt models may be spurious and should be deleted if so



pandda.analyse PanDDA2 - Useful tricks



PanDDA 2 accepts several keyword arguments that may be useful:

To Run Subsets Of Data

```
--dataset_range="100-200"
```

```
--only_datasets="BAZ2BA-x102, BAZ2BA-x097"
```

To Filter Poor Quality Data

```
--high_res_lower_limit=3.0
```

```
--max_rfree=0.3
```

[PanDDA2 Documentation](#)

grid spacing (default=0.5)

keyword arguments (pandda2 only)

Questions?